

SQUARE LENS/MOUNTS FOR 3mm & 5mm LEDs



U.S. & Foreign Patents Issued and Pending

VISIBILITY

CLIPLITE® CUBELITE® standard square lens offers 20% more viewing area over a round indicator light. The CUBELITE® lenses' unique patented features include striated lines and fresnel rings permitting up to 180 degrees viewing angle with any stock 3mm or 5mm LED.

DESIGN

CUBELITE® standard lens mounts in a square hole. Its uniform lens thickness produces an even light pattern with no dark corners. CUBELITE® low profile square lens mounts in a round hole. This lens has a .070" maximum panel height and still produces a 180 degree viewing angle. The design of the CUBELITE® lens permits use of either diffused or nondiffused LEDs.

PROTECTION

CUBELITE® helps prevent IC failures caused by electrostatic discharge (ESD). Simply walking across a carpet can generate 10,000 volts. Introduction of this ESD through an exposed panel mounted LED is capable of damaging or destroying a semiconductor. A CUBELITE® mounted LED helps guard components from ESD up to 16,000 volts as well as affording the LED physical protection.

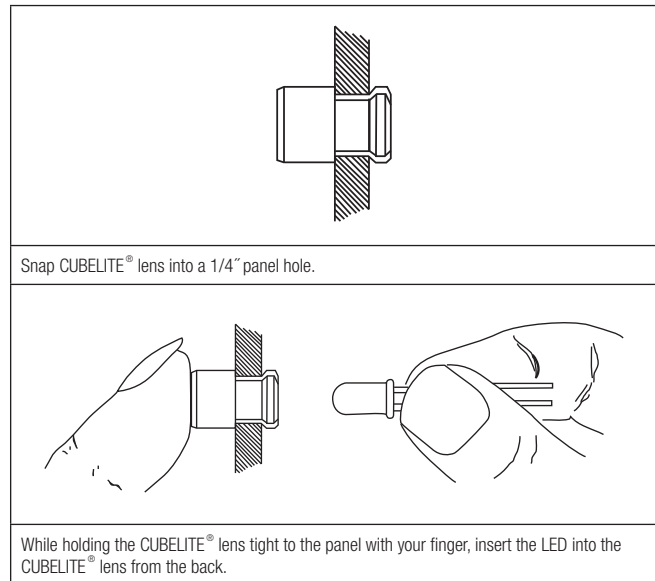
INSTALLATION

CUBELITE® standard or low profile, requires no assembly tools; just snap into a panel opening and insert LED. Cost effective operation is complete in only 6 seconds.

SPECIFICATIONS

MATERIAL	Lens - Polycarbonate Spacer - Polypropylene (U.L. Listed Materials)
MOUNTING	Mounts through front of panel. Mounting holes should be deburred but not chamfered. 3mm (SMQ 250) mounts in .171" ± .002" (4.34mm) round hole on 1/4" centers. Panel thickness from 1/16" to 1/8". 5mm (SQL 360) mounts in .250" ± .002" (6.35mm) square punched hole on 3/8" centers. Panel thickness from 1/16" to 1/8"; 5mm (SQB 400) mounts in .250" ± .002" (6.35mm) round hole on 3/8" centers. Panel thickness from 1/32" to 1/4"; for panels less than 3/16", use SPC 125 spacer.

EASY TWO-STEP INSTALLATION



ORDERING CODES

SQL 360 RTP

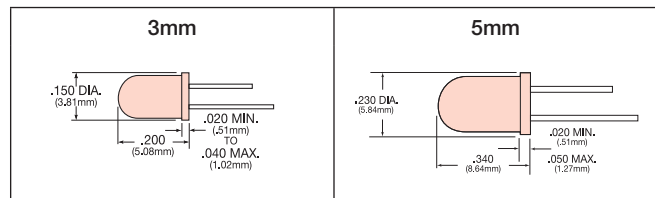
MODEL

SMQ 250 (3mm) Low Profile
SQB 400 (5mm) Low Profile
SQL 360 (5mm) Std. Hgt.
SPC 125 (Spacer for SQB 400)

COLOR

RTP Red Transparent
ATP Amber Transparent
GTP Green Transparent
BTP Blue Transparent
YTP Yellow Transparent
CTP Clear Transparent

RECOMMENDED LEDs



OUTLINE DRAWINGS

