

**Lenses for EVERLIGHT™ LEDs**

**Index**



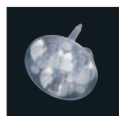
**PLN261 Series**

Page 02



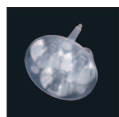
**PLN251 Series**

Page 03



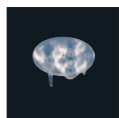
**PL356TL Series**

Page 04



**PL356NK Series**

Page 05



**PL607 Series**

Page 06



**KEPLN321 Series**

Page 07



**KEPLN21 Series**

Page 08 - 09



**PLN309 Series**

Page 10



**PL021 Series**

Page 11



**KEPLN261 Series**

Page 12



**PL505 Series**

Page 13



**KEPL35 Series**

Page 14



**KEPLN191 Series**

Page 15 - 16

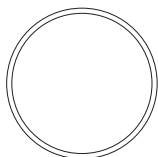
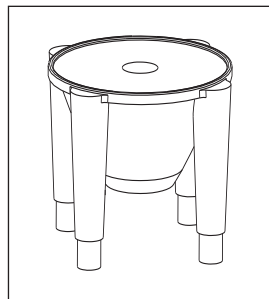
– All rights reserved. No part of this publication may be copied, reproduced in any form or by any means, electronic, mechanical, photocopying, recording or otherwise, illustrations removed, without our prior permission. Khatod Optoelectronic srl reserves the right to make changes at any time in order to supply the best products possible.

**Lenses for EVERLIGHT™** **PLN261 Series**

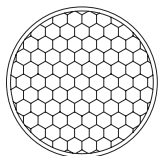


**PLN261 Series**

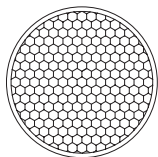
- ▶ NJC™ Technology
- ▶ High efficiency
- ▶ Patent pending
- ▶ Thermally stable
- ▶ Free testing and technical support
- ▶ No mould charge on custom lenses



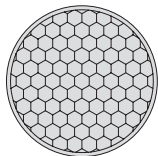
Part Number	Type	LED type	Degree
<b>PLN 26106</b>	Narrow Beam	EVERLIGHT™ 1W	10



Part Number	Type	LED type	Degree
<b>PLN 26125</b>	Medium Beam	EVERLIGHT™ 1W	25

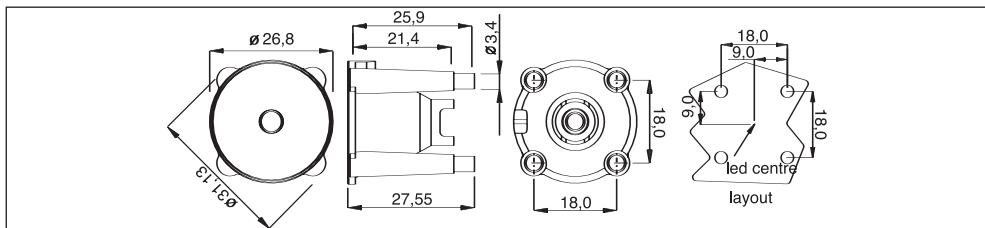


Part Number	Type	LED type	Degree
<b>PLN 26140</b>	Wide Beam	EVERLIGHT™ 1W	40

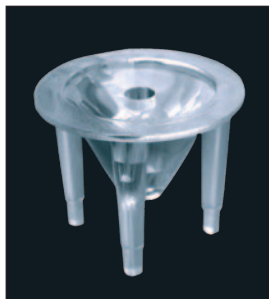


Part Number	Type	LED type	Degree
<b>PLN 26125LSD</b>	Medium Beam	EVERLIGHT™ 1W	30

For further information visit our web site: [www.khatod.com](http://www.khatod.com)

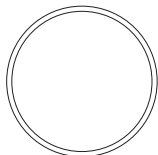
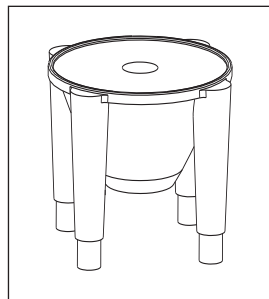


**Lenses for EVERLIGHT™** **PLN251 Series**

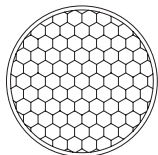


**PLN251 Series**

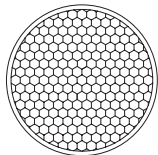
- ▶ NJC™ Technology
- ▶ High efficiency
- ▶ Patent pending
- ▶ No mould charge on custom lenses
- ▶ Free testing and technical support
- ▶ **Standard MR11**



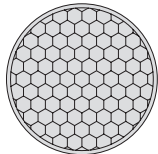
Part Number	Type	LED type	Degree
<b>PLN 25106</b>	Narrow Beam	EVERLIGHT™ 1W	10



Part Number	Type	LED type	Degree
<b>PLN 25125</b>	Medium Beam	EVERLIGHT™ 1W	25

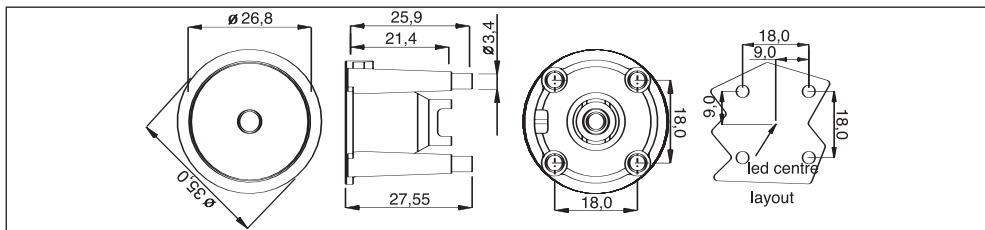


Part Number	Type	LED type	Degree
<b>PLN 25140</b>	Wide Beam	EVERLIGHT™ 1W	40



Part Number	Type	LED type	Degree
<b>PLN 25125LSD</b>	Medium Beam	EVERLIGHT™ 1W	30

For further information visit our web site: [www.khatod.com](http://www.khatod.com)



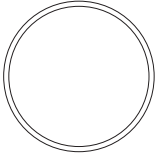
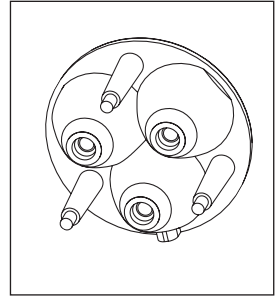
**Triple Lenses for EVERLIGHT™**

**PL356TL Series**

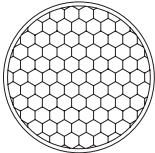


**PL356TL Series**

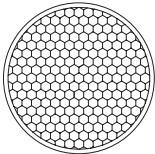
- ▶ NJC™ Technology
- ▶ Patent pending
- ▶ No mould charge on custom lenses
- ▶ No vibration problems
- ▶ Standard MR16



Part Number	Type	LED type	Degree
<b>PL 35606TL</b>	Narrow Beam	EVERLIGHT™ 1W	10

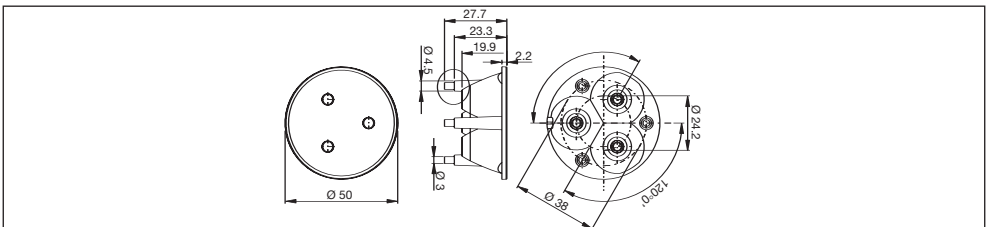
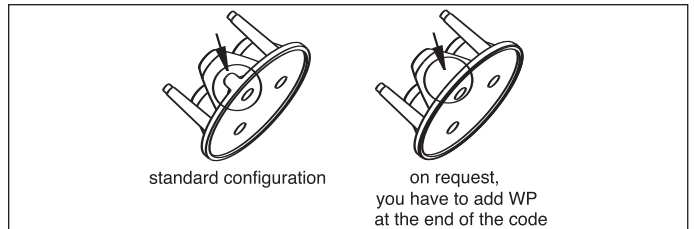


Part Number	Type	LED type	Degree
<b>PL 35625TL</b>	Medium Beam	EVERLIGHT™ 1W	25



Part Number	Type	LED type	Degree
<b>PL 35640TL</b>	Wide Beam	EVERLIGHT™ 1W	40

**Configuration**



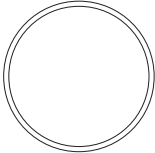
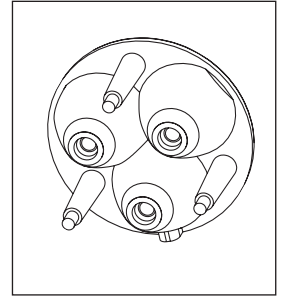
**Triple Lenses for EVERLIGHT™**

**PL356NK Series**

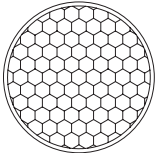


**PL356NK Series**

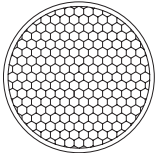
- ▶ NJC™ Technology
- ▶ High efficiency
- ▶ Patent pending
- ▶ No mould charge on custom lenses
- ▶ Free testing and technical support
- ▶ **Standard MR16**



Part Number	Type	LED type	Degree
<b>PL 35606NK</b>	Narrow Beam	EVERLIGHT™ 1W	10

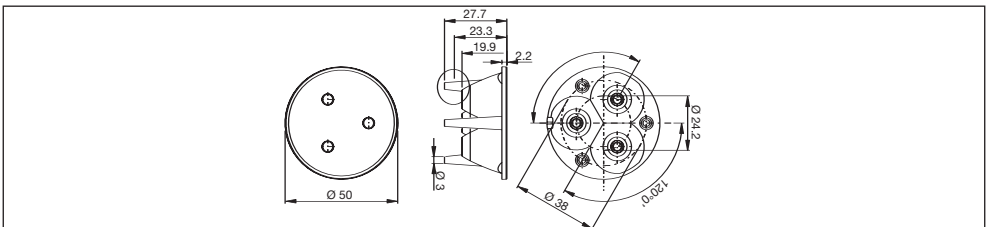
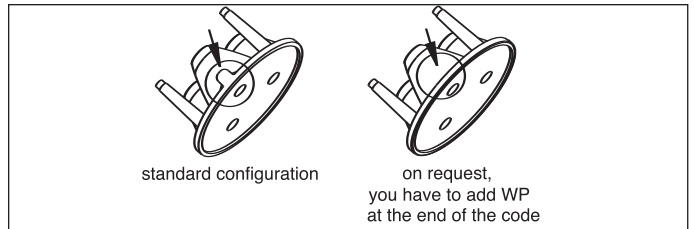


Part Number	Type	LED type	Degree
<b>PL 35625NK</b>	Medium Beam	EVERLIGHT™ 1W	25



Part Number	Type	LED type	Degree
<b>PL 35640NK</b>	Wide Beam	EVERLIGHT™ 1W	40

**Configuration**



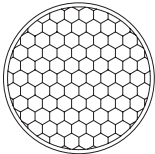
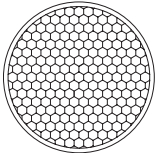
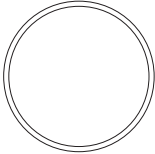
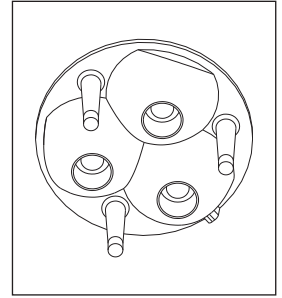
**Mini Triple Lenses for EVERLIGHT™**

**PL607 Series**



**PL607 Series**

- ▶ NJC™ Technology
- ▶ High efficiency
- ▶ Patent pending
- ▶ No mould charge on custom lenses
- ▶ Free testing and technical support
- ▶ **Standard MR11**

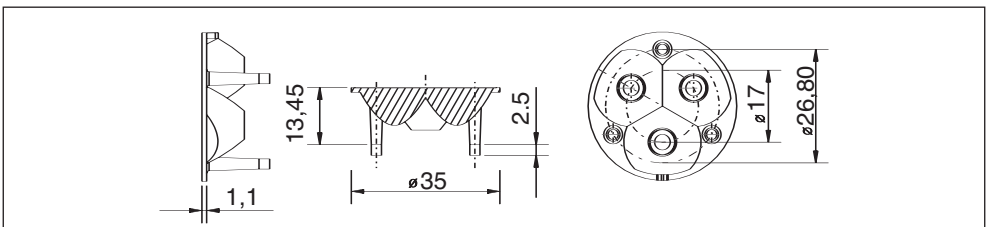


Part Number	Type	LED type	Degree
<b>PL 60706</b>	Narrow Beam	EVERLIGHT™ 1W	10

Part Number	Type	LED type	Degree
<b>PL 60725</b>	Medium Beam	EVERLIGHT™ 1W	25

Part Number	Type	LED type	Degree
<b>PL 60740</b>	Wide Beam	EVERLIGHT™ 1W	40

For further information visit our web site: [www.khatod.com](http://www.khatod.com)



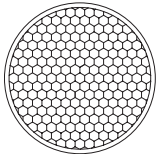
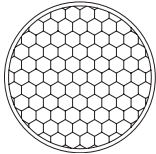
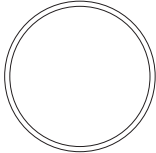
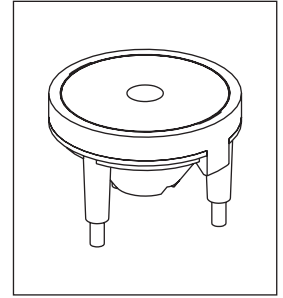
**Lenses for EVERLIGHT™**

**KEPLN321 Series**



**KEPLN321 Series**

- ▶ Available in different beams
- ▶ High efficiency
- ▶ Thermally stable
- ▶ Collimator lenses are available in 9 colours options
- ▶ Free testing and technical support
- ▶ No mould charge on custom lenses



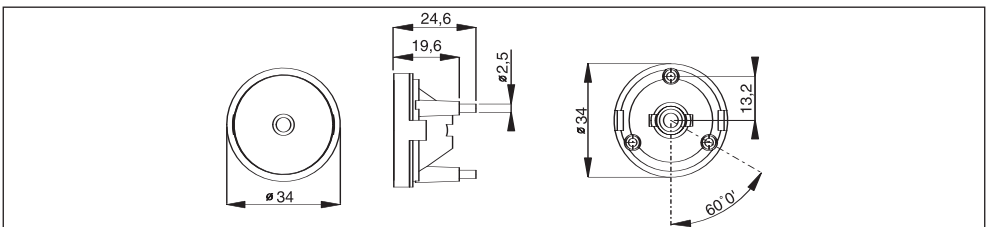
Part Number	Type	LED type	Degree
<b>KEPLN 32106</b>	Narrow Beam	EVERLIGHT™ 1W	10

Part Number	Type	LED type	Degree
<b>KEPLN 32125</b>	Medium Beam	EVERLIGHT™ 1W	25

Part Number	Type	LED type	Degree
<b>KEPLN 32140</b>	Wide Beam	EVERLIGHT™ 1W	40

**For order only the lens replace KEPL with only PL**

For further information visit our web site: [www.khatod.com](http://www.khatod.com)



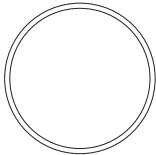
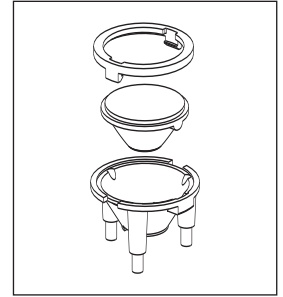
**Lenses for EVERLIGHT™**

**KEPLN21 Series**

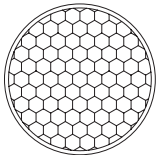


**KEPLN21 Series**

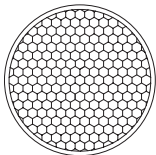
- ▶ Available in different beams
- ▶ High efficiency
- ▶ Thermally stable
- ▶ Free testing and technical support
- ▶ No mould charge on custom lenses



Part Number	Type	LED type	Degree
<b>KEPLN 2106</b>	Narrow Beam	EVERLIGHT™ 1W	10



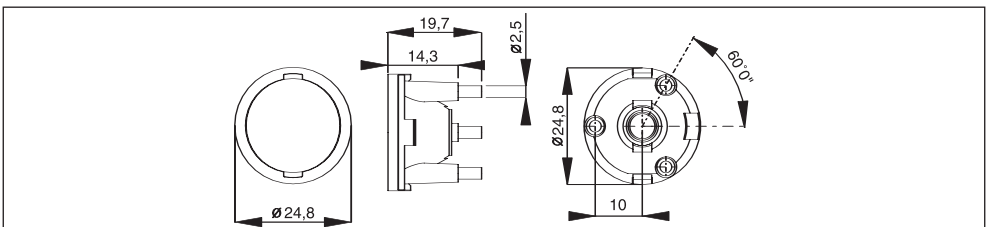
Part Number	Type	LED type	Degree
<b>KEPLN 2125</b>	Medium Beam	EVERLIGHT™ 1W	25



Part Number	Type	LED type	Degree
<b>KEPLN 2140</b>	Wide Beam	EVERLIGHT™ 1W	40

**For order only the lens replace KEPL with only PL**

For further information visit our web site: [www.khatod.com](http://www.khatod.com)



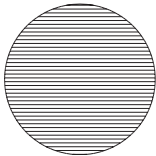
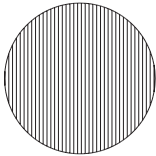
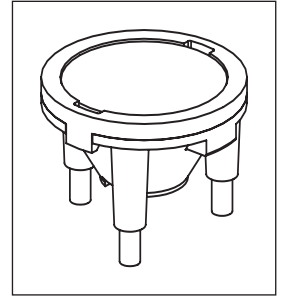
**Lenses for EVERLIGHT™**

**KEPLN21 elliptical Series**



**KEPLN21 elliptical Series**

- ▶ Available in different beams
- ▶ High efficiency
- ▶ Thermally stable
- ▶ Free testing and technical support
- ▶ No mould charge on custom lenses

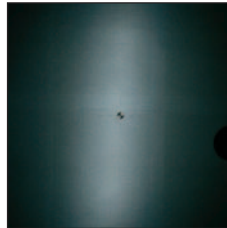


Part Number	Type	LED type	Degree
<b>KEPLN 21EL/H</b>	Elliptical Horizontal Beam	EVERLIGHT™ 1W	15x90

Part Number	Type	LED type	Degree
<b>KEPLN 21EL/V</b>	Elliptical Vertical Beam	EVERLIGHT™ 1W	90x15

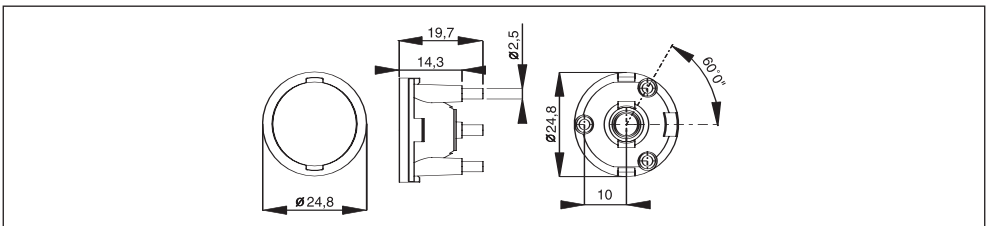


**KEPL 22EL/H**



**KEPL 22EL/V**

For further information visit our web site: [www.khatod.com](http://www.khatod.com)

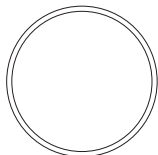
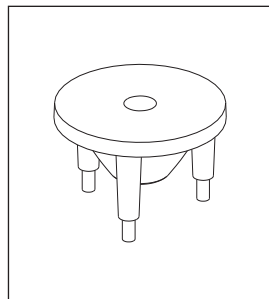


**Lenses for EVERLIGHT™** **PLN309 Series**

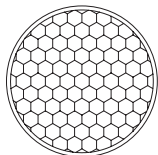


**PLN309 Series**

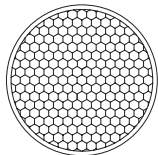
- ▶ NJC™ Technology
- ▶ High efficiency
- ▶ Patent pending
- ▶ Thermally stable (PC)
- ▶ Free testing and technical support
- ▶ No mould charge on custom lenses



Part Number	Type	LED type	Degree
<b>PLN 30906</b>	Narrow Beam	EVERLIGHT™ 1W	10

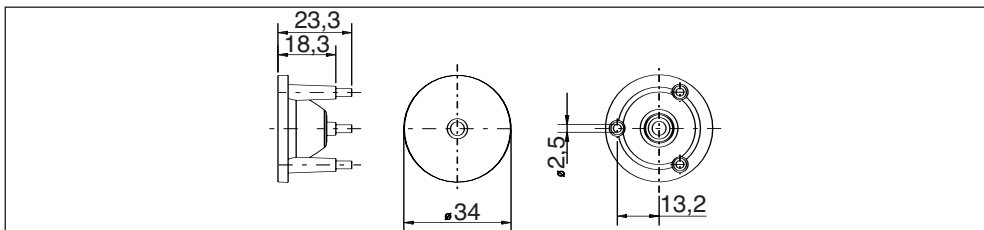


Part Number	Type	LED type	Degree
<b>PLN 30925</b>	Medium Beam	EVERLIGHT™ 1W	25



Part Number	Type	LED type	Degree
<b>PLN 30940</b>	Wide Beam	EVERLIGHT™ 1W	40

For further information visit our web site: [www.khatod.com](http://www.khatod.com)



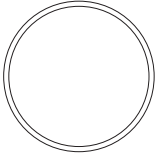
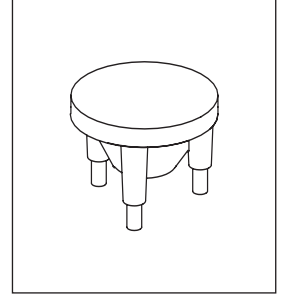
**Lenses for EVERLIGHT™**

**PL021 Series**

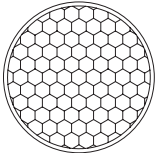


**PL021 Series**

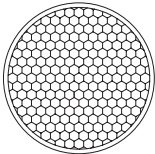
- ▶ NJC™ Technology
- ▶ High efficiency
- ▶ Patent pending
- ▶ Thermally stable (PC)
- ▶ Free testing and technical support
- ▶ No mould charge on custom lenses



Part Number	Type	LED type	Degree
<b>PL 02106</b>	Narrow Beam	EVERLIGHT™ 1W	10

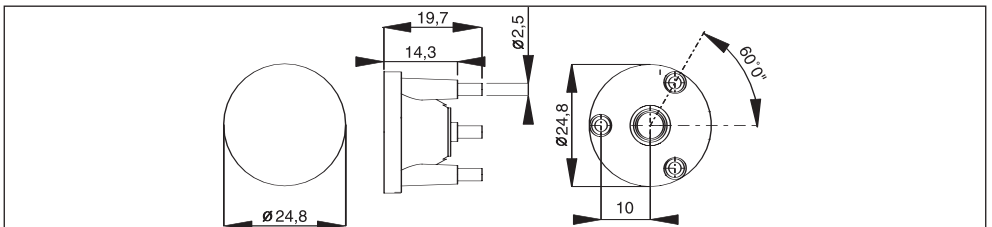


Part Number	Type	LED type	Degree
<b>PL 02125</b>	Medium Beam	EVERLIGHT™ 1W	25



Part Number	Type	LED type	Degree
<b>PL 02140</b>	Wide Beam	EVERLIGHT™ 1W	40

For further information visit our web site: [www.khatod.com](http://www.khatod.com)

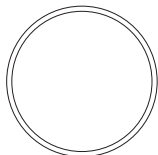
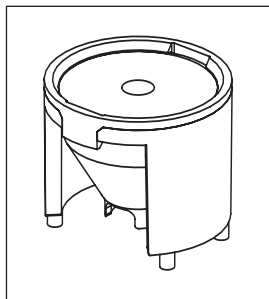


**Lenses for EVERLIGHT™ KEPLN261 Series**

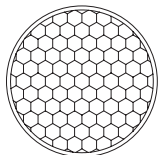


**KEPLN261 Series**

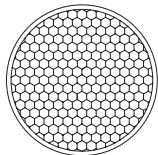
- ▶ Available in different beams
- ▶ High efficiency
- ▶ Thermally stable
- ▶ Free testing and technical support
- ▶ No mould charge on custom lenses



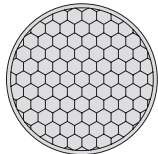
Part Number	Type	LED type	Degree
<b>KEPLN 26106</b>	Narrow Beam	EVERLIGHT™ 1W	10



Part Number	Type	LED type	Degree
<b>KEPLN 26125</b>	Medium Beam	EVERLIGHT™ 1W	25



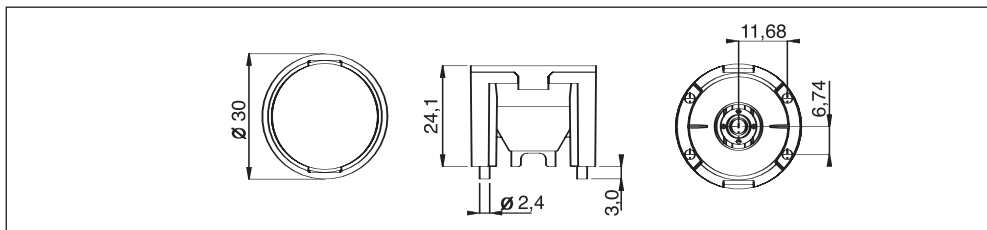
Part Number	Type	LED type	Degree
<b>KEPLN 26140</b>	Wide Beam	EVERLIGHT™ 1W	40



Part Number	Type	LED type	Degree
<b>KEPLN 26125LSD</b>	Medium Beam	EVERLIGHT™ 1W	30

**For order only the lens replace KEPL with only PL**

For further information visit our web site: [www.khatod.com](http://www.khatod.com)



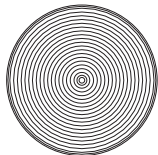
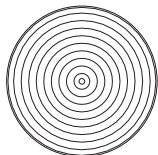
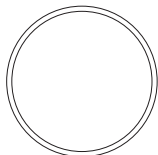
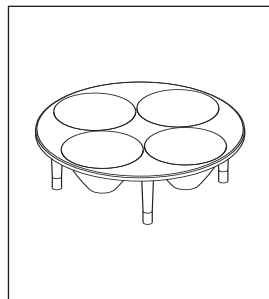
**Quad Lenses for EVERLIGHT™**

**PL505 Series**



**PL505 Series**

- ▶ NJC™ Technology
- ▶ High efficiency
- ▶ Patent pending
- ▶ Thermally stable
- ▶ Free testing and technical support
- ▶ **Standard MR16**

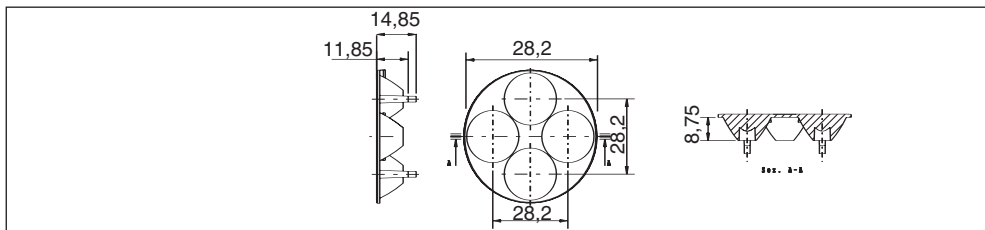


Part Number	Type	LED type	Degree
<b>PL 50506</b>	Narrow Beam	EVERLIGHT™ 1W	10

Part Number	Type	LED type	Degree
<b>PL 50525</b>	Medium Beam	EVERLIGHT™ 1W	25

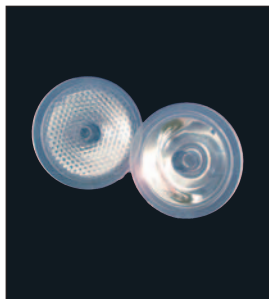
Part Number	Type	LED type	Degree
<b>PL 50540W</b>	Wide Beam	EVERLIGHT™ 1W	40

For further information visit our web site: [www.khatod.com](http://www.khatod.com)



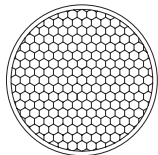
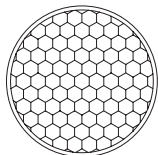
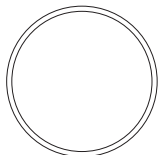
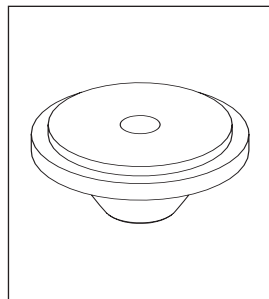
**Lenses for EVERLIGHT™**

**KEPL35 Series**



**KEPL35 Series**

- ▶ Available in different beams
- ▶ High efficiency
- ▶ No mould charge on custom lenses
- ▶ Free testing and technical support
- ▶ **Standard MR11**

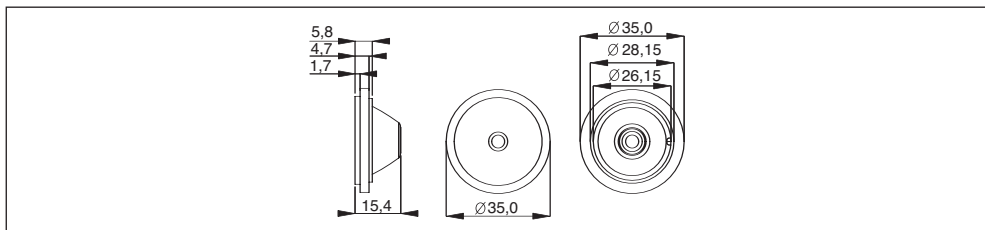


Part Number	Type	LED type	Degree
<b>KEPL 3506</b>	Narrow Beam	EVERLIGHT™ 1W	10

Part Number	Type	LED type	Degree
<b>KEPL 3525</b>	Medium Beam	EVERLIGHT™ 1W	25

Part Number	Type	LED type	Degree
<b>KEPL 3540</b>	Wide Beam	EVERLIGHT™ 1W	40

For further information visit our web site: [www.khatod.com](http://www.khatod.com)



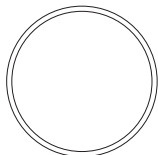
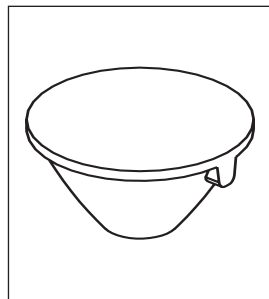
**Lenses for EVERLIGHT™**

**KEPLN191 Series**

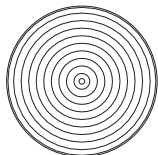


**KEPLN191 Series**

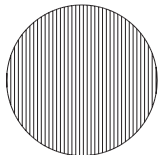
- ▶ Available in different beams
- ▶ High efficiency
- ▶ Thermally stable
- ▶ Collimator lenses are available in 9 colours options



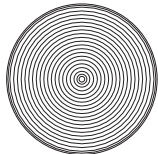
Part Number	Type	LED type	Degree
<b>PLN 19106</b>	Narrow Beam	EVERLIGHT™ 1W	10



Part Number	Type	LED type	Degree
<b>PLN 19125</b>	Medium Beam	EVERLIGHT™ 1W	25

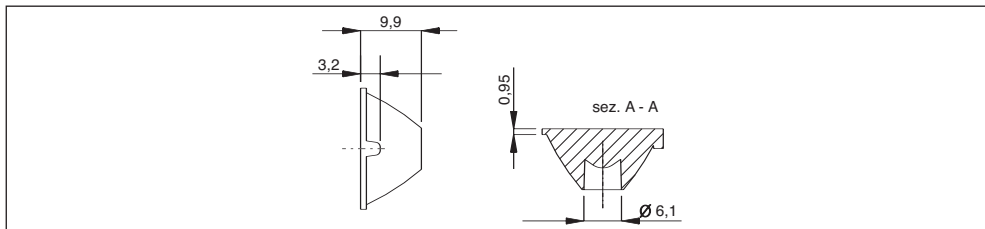


Part Number	Type	LED type	Degree
<b>PLN 19140</b>	Elliptical Beam	EVERLIGHT™ 1W	15X90



Part Number	Type	LED type	Degree
<b>PLN 19140W</b>	Wide Beam	EVERLIGHT™ 1W	40

For further information visit our web site: [www.khatod.com](http://www.khatod.com)



**Lenses for EVERLIGHT™** ***KEPLN191 Series***



Part Number	Type	LED type	Degree
<b>KE 191</b>	Collimator	EVERLIGHT™ 1W	

