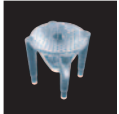


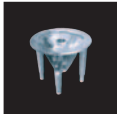
Lenses for LAMINA[®] LEDs

Index



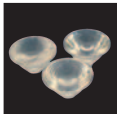
PL067 Series

Page 02



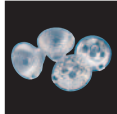
PL057 Series

Page 03



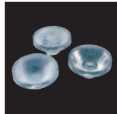
PL097 Series

Page 04



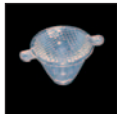
PL068 Series

Page 05



PL003 Series

Page 06



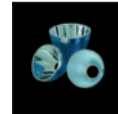
PL5068 Series

Page 07



PLJT20 Series

Page 08



KCLP Series

Page 09

- All rights reserved. No part of this publication may be copied, reproduced in any form or by any means, electronic, mechanical, photocopying, recording or otherwise, illustrations removed, without our prior permission.
Khatod Optoelectronic srl reserves the right to make changes at any time in order to supply the best products possible.

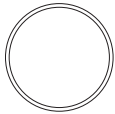
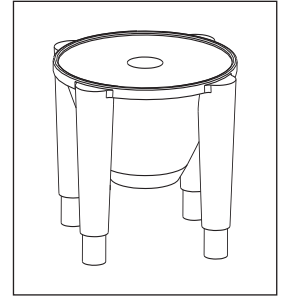
Lenses for LAMINA® LEDs

PL067 Series

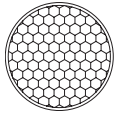


PL067 Series

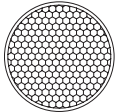
- ▶ NJC™ Technology
- ▶ High efficiency
- ▶ Patent pending
- ▶ Free testing and technical support
- ▶ No mould charge on custom lenses



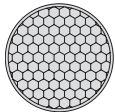
Part Number	Type	LED type	Degree
PL 06706	Narrow Beam	LAMINA® BL4000/Atlas	10



Part Number	Type	LED type	Degree
PL 06725	Medium Beam	LAMINA® BL4000/Atlas	25

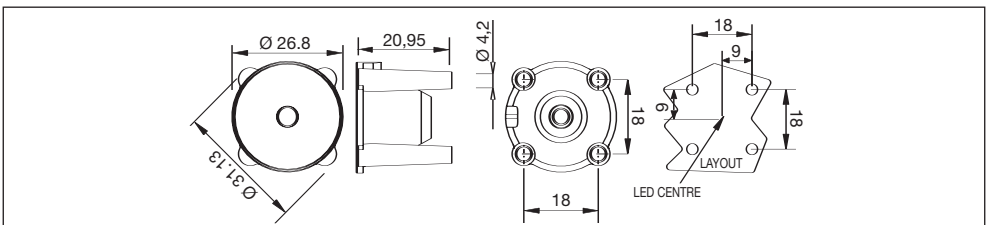


Part Number	Type	LED type	Degree
PL 06740	Wide Beam	LAMINA® BL4000/Atlas	40



Part Number	Type	LED type	Degree
PL 06725LSD	Medium Beam	LAMINA® BL4000/Atlas	30

For further information visit our web site: www.khatod.com



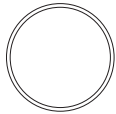
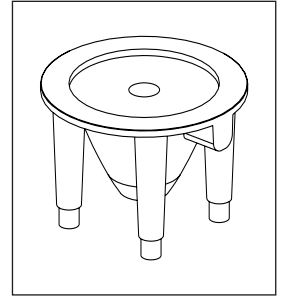
Lenses for LAMINA® LEDs

PL057 Series

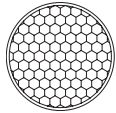


PL057 Series

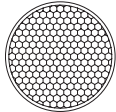
- ▶ NJC™ Technology
- ▶ High efficiency
- ▶ Patent pending
- ▶ Thermally stable
- ▶ Free testing and technical support
- ▶ **Standard MR11**



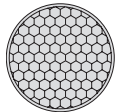
Part Number	Type	LED type	Degree
PL 05706	Narrow Beam	LAMINA® BL4000/Atlas	10



Part Number	Type	LED type	Degree
PL 05725	Medium Beam	LAMINA® BL4000/Atlas	25

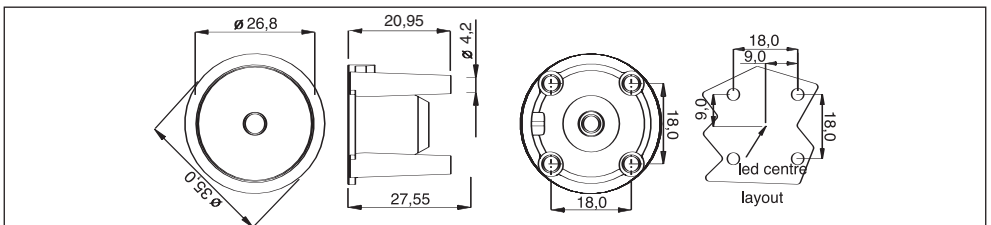


Part Number	Type	LED type	Degree
PL 05740	Wide Beam	LAMINA® BL4000/Atlas	40



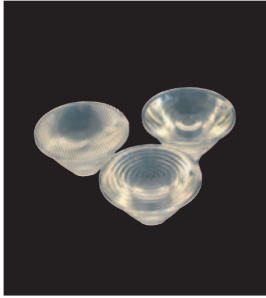
Part Number	Type	LED type	Degree
PL 05725LSD	Medium Beam	LAMINA® BL4000/Atlas	30

For further information visit our web site: www.khatod.com



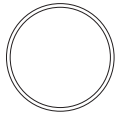
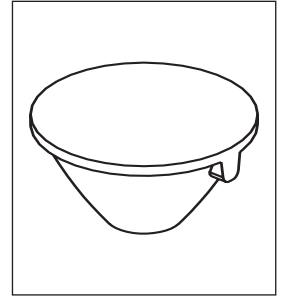
Lenses for LAMINA® LEDs

PL097 Series



PL097 Series

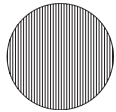
- ▶ Available in different beams
- ▶ High efficiency



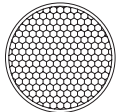
Part Number	Type	LED type	Degree
PL 09706	Narrow Beam	LAMINA® BL4000/Atlas	10



Part Number	Type	LED type	Degree
PL 09725	Medium Beam	LAMINA® BL4000/Atlas	25

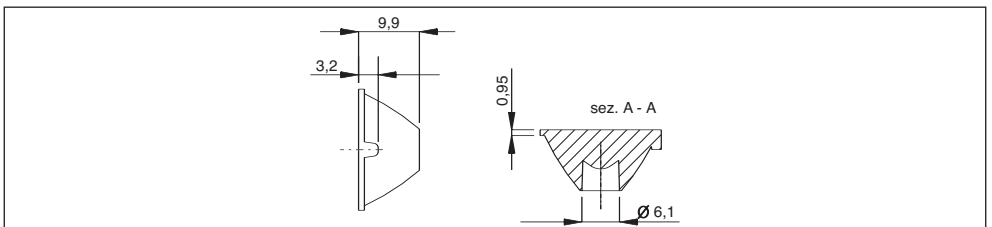


Part Number	Type	LED type	Degree
PL 09740	Elliptical Beam	LAMINA® BL4000/Atlas	15X90



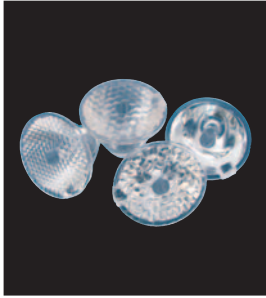
Part Number	Type	LED type	Degree
PL 09740W	Wide Beam	LAMINA® BL4000/Atlas	40

For further information visit our web site: www.khatod.com



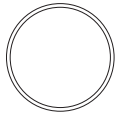
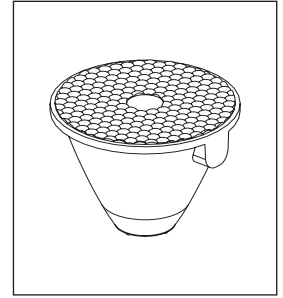
Lenses for LAMINA® LEDs

PL068 Series

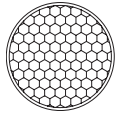


PL068 Series

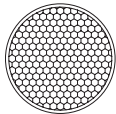
- ▶ Available in different beams
- ▶ High efficiency
- ▶ Free testing and technical support
- ▶ No mould charge on custom lenses



Part Number	Type	LED type	Degree
PL 06806	Narrow Beam	LAMINA® BL4000/Atlas	10



Part Number	Type	LED type	Degree
PL 06825	Medium Beam	LAMINA® BL4000/Atlas	25

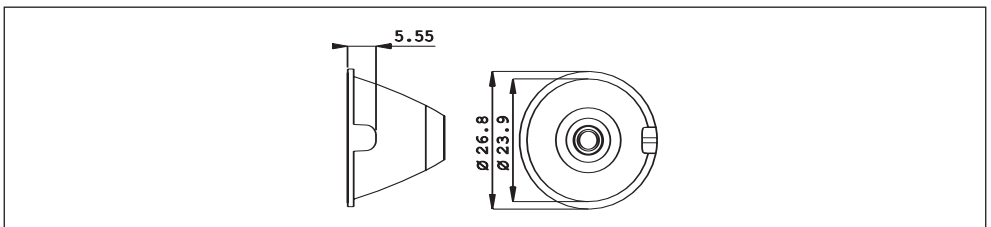


Part Number	Type	LED type	Degree
PL 06840	Wide Beam	LAMINA® BL4000/Atlas	40



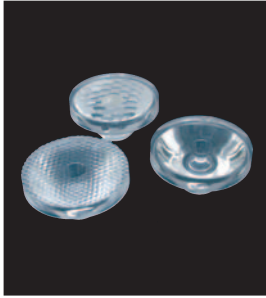
Part Number	Type	LED type	Degree
PL 06825LSD	Medium Beam	LAMINA® BL4000/Atlas	30

For further information visit our web site: www.khatod.com



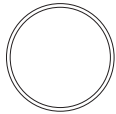
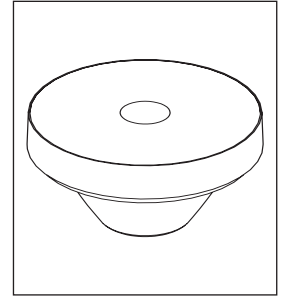
Lenses for LAMINA® LEDs

PL003 Series

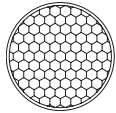


PL003 Series

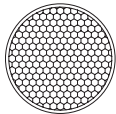
- ▶ Available in different beams
- ▶ High efficiency
- ▶ Free testing and technical support
- ▶ No mould charge on custom lenses



Part Number	Type	LED type	Degree
PL 00306	Narrow Beam	LAMINA® BL4000/Atlas	10

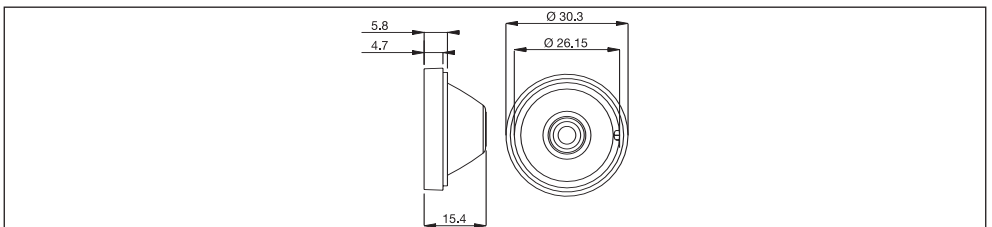


Part Number	Type	LED type	Degree
PL 00325	Medium Beam	LAMINA® BL4000/Atlas	25



Part Number	Type	LED type	Degree
PL 00340	Wide Beam	LAMINA® BL4000/Atlas	40

For further information visit our web site: www.khatod.com



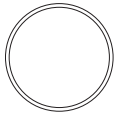
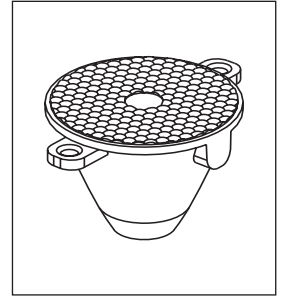
Lenses for LAMINA® LEDs

PL5068 Series

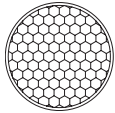


PL5068 Series

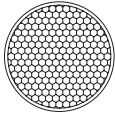
- ▶ Available in different beams
- ▶ High efficiency
- ▶ Free testing and technical support
- ▶ No mould charge on custom lenses



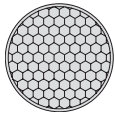
Part Number	Type	LED type	Degree
PL 506806	Narrow Beam	LAMINA® BL4000/Atlas	10



Part Number	Type	LED type	Degree
PL 506825	Medium Beam	LAMINA® BL4000/Atlas	25

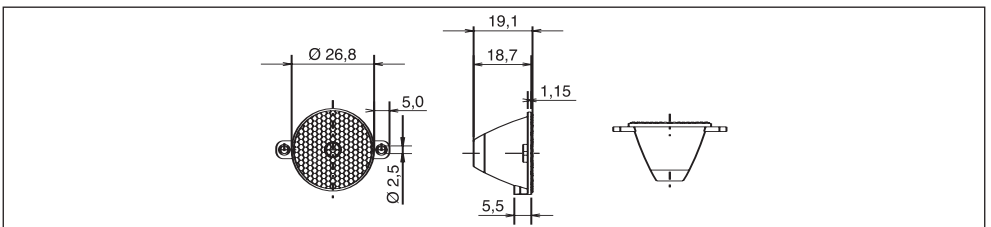


Part Number	Type	LED type	Degree
PL 506840	Wide Beam	LAMINA® BL4000/Atlas	40



Part Number	Type	LED type	Degree
PL 506825LSD	Medium Beam	LAMINA® BL4000/Atlas	30

For further information visit our web site: www.khatod.com



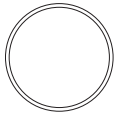
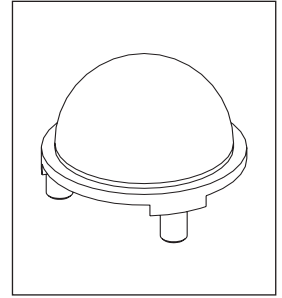
Lenses for LAMINA® LEDs

PLJT20



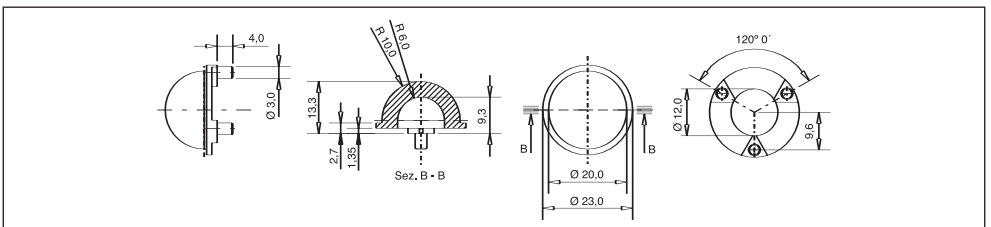
PLJT20

- ▶ High efficiency
- ▶ No vibration problems
- ▶ Free testing and technical support



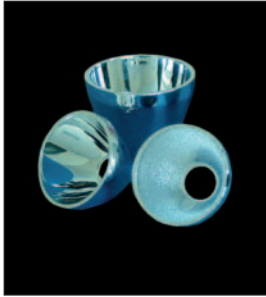
Part Number	Type	LED type	Degree
PL JT20	Light Marker	LAMINA® BL4000/Atlas	360

For further information visit our web site: www.khatod.com



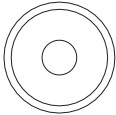
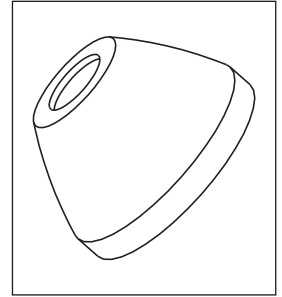
Reflectors for LAMINA® LEDs

KCLP17 Series

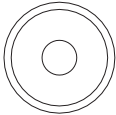


KCLP17 Series

- ▶ High efficiency
- ▶ Designed for Lambertian LEDs
- ▶ CR: Metalized
- ▶ ST: Embossed surface

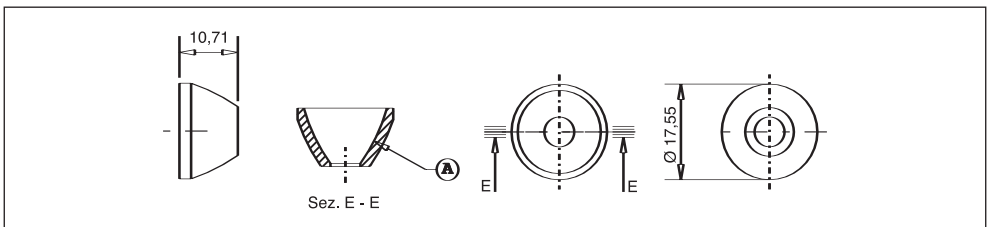


Part Number	Type	LED type	Degree
KCLP 17 CR	Narrow Beam	LAMINA® BL4000/Atlas	6



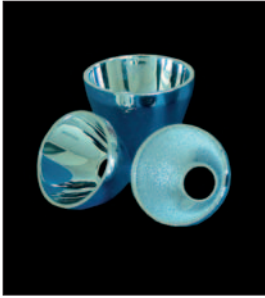
Part Number	Type	LED type	Degree
KCLP 17 ST	Medium Beam	LAMINA® BL4000/Atlas	35

For further information visit our web site: www.khatod.com



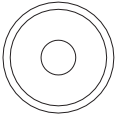
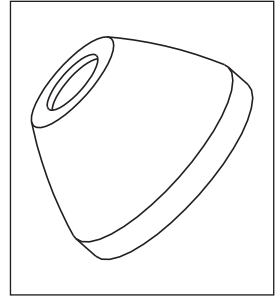
Reflectors for LAMINA® LEDs

KCLP20 Series

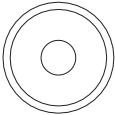


KCLP20 Series

- ▶ High efficiency
- ▶ Designed for Lambertian LEDs
- ▶ CR: Metalized
- ▶ ST: Embossed surface

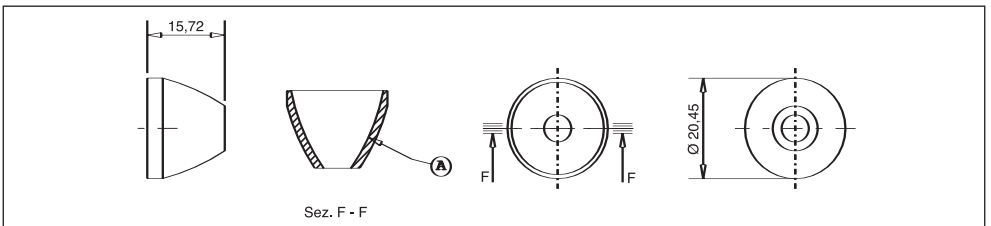


Part Number	Type	LED type	Degree
KCLP 20 CR	Narrow Beam	LAMINA® BL4000/Atlas	6



Part Number	Type	LED type	Degree
KCLP 20 ST	Medium Beam	LAMINA® BL4000/Atlas	25

For further information visit our web site: www.khatod.com



Khatod Lens Use and Maintenance

- ▶ DO NOT HANDLE OR INSTALL LENSES WITHOUT WEARING GLOVES, SKIN OILS MAY DAMAGE LENS OR LIGHT TRANSMISSION
- ▶ CLEAN LENSES WITH MILD SOAP AND WATER AND A SOFT CLOTH
- ▶ DO NOT USE ANY COMMERCIAL CLEANING SOLVENTS ON LENSES

Khatod Optoelectronic Srl, Milan, Italy, manufactures lenses for LEDs. Any other use of the lens shall void our liability and warranty. The lenses are an inert component to be used in the manufacture of various products. Our warranty and liability are limited only to the manufacture of the lens. You may not modify, copy, distribute, reproduce, license or alter the lens and related materials of Khatod Optoelectronic Srl. Khatod Optoelectronic Srl does not warrant against damages or defects arising out of the use or misuse of the products; against defects or damage arising from improper installation, or against defects in the product or in its components. No warranty of any kind, expressed or implied, is made regarding the safety of the products. The entire risk as to the quality or performance of the product is with the buyer. In no event shall Khatod Optoelectronic Srl or Khatod USA be liable for any direct, indirect, punitive, incidental, special, consequential damages, or any damages whatsoever arising out of or connected with the use or misuse of the product. Khatod Optoelectronic Srl shall not have any obligation with respect to the product or any part thereof, whether based on contract, tort, strict liability or otherwise. Buyer assumes all risks and liability from use of the product. The laws of Milan, Italy govern this product warranty and liability and you hereby consent to the exclusive jurisdiction and venue of courts in Milan, Italy in all disputes arising out of or relating to the use of this product.